

FULL LIST OF WORKS IN THE EDLIS/NEESON COLLECTION

Paintings and Sculptures



Jasper Johns. *Target*, 1961.
The Art Institute of Chicago, Gift of Edlis/Neeson
Collection.



Jasper Johns. *Figure 4*, 1959.
The Art Institute of Chicago, Gift of Edlis/Neeson
Collection.



Jasper Johns. *Alphabet*, 1959.
The Art Institute of Chicago, Gift of Edlis/Neeson
Collection.



Robert Rauschenberg. *Untitled*, circa 1955.
The Art Institute of Chicago, Gift of Edlis/Neeson
Collection.



Andy Warhol. *Flowers*, 1964.
The Art Institute of Chicago, Gift of Edlis/Neeson
Collection.



Andy Warhol. *Twelve Jackies*, 1964.
The Art Institute of Chicago, Gift of Edlis/Neeson
Collection.



Andy Warhol. *Self-Portrait*, 1964.
The Art Institute of Chicago, Gift of Edlis/Neeson
Collection.



Andy Warhol. *Little Race Riot*, 1964.
The Art Institute of Chicago, Gift of Edlis/Neeson
Collection.



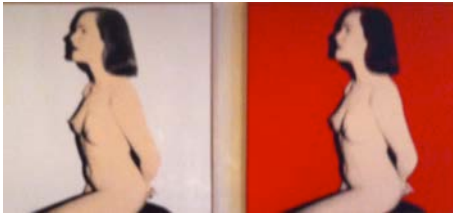
Andy Warhol. *Self-Portrait*, 1966.
The Art Institute of Chicago, Gift of Edlis/Neeson
Collection.



Andy Warhol. *Big Electric Chair*, 1967-68.
The Art Institute of Chicago, Gift of Edlis/Neeson
Collection.



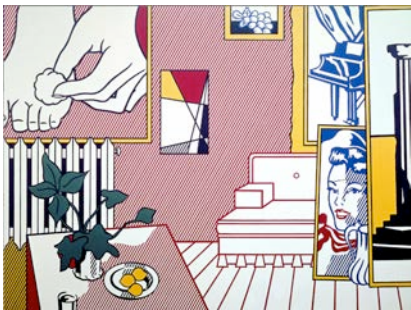
Andy Warhol. *Mona Lisa Four Times*, 1978.
The Art Institute of Chicago, Gift of Edlis/Neeson
Collection.



Andy Warhol. *Pat Hearn (diptych)*, 1985.
The Art Institute of Chicago, Gift of Edlis/Neeson
Collection.



Andy Warhol. *Liz #3 [Early Colored Liz]*, 1963.
The Art Institute of Chicago, Partial and Promised
gift of Stefan T. Edlis.



Roy Lichtenstein. *Artist's Studio "Foot Medication,"*
1974. The Art Institute of Chicago, Gift of
Edlis/Neeson Collection.



Roy Lichtenstein. *Woman III*, 1982.
The Art Institute of Chicago, Gift of Edlis/Neeson
Collection.



Gerhard Richter. *Hunting Party*, 1966.
The Art Institute of Chicago, Gift of Edlis/Neeson
Collection.



Gerhard Richter. *Stadtbild*, 1968.
The Art Institute of Chicago, Gift of Edlis/Neeson
Collection.



Gerhard Richter. *Davos*, 1981.
The Art Institute of Chicago, Gift of Edlis/Neeson
Collection.



Gerhard Richter. *Venedig (Treppe)*, 1985.
The Art Institute of Chicago, Gift of Edlis/Neeson
Collection.



Brice Marden. *Study for the Muses (Eagles Mere
Version)*, 1991-94/1997-99.
The Art Institute of Chicago, Gift of Edlis/Neeson
Collection.



Cy Twombly. *Untitled*, 1953.
The Art Institute of Chicago, Gift of Edlis/Neeson
Collection.



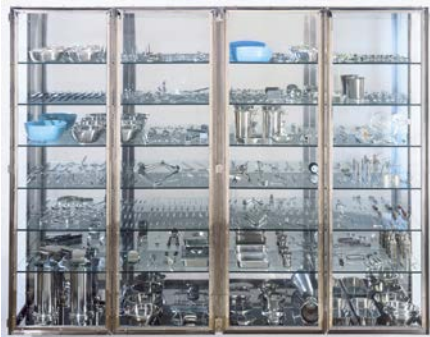
Cy Twombly. *Untitled (Bolsena)*, 1969.
The Art Institute of Chicago, Gift of Edlis/Neeson
Collection.



Jeff Koons. *Christ and the Lamb*, 1988.
The Art Institute of Chicago, Gift of Edlis/Neeson
Collection.



Jeff Koons. *Bourgeois Bust – Jeff and Ilona*, 1991.
The Art Institute of Chicago, Gift of Edlis/Neeson
Collection.



Damien Hirst. *Still*, 1994.
The Art Institute of Chicago, Gift of Edlis/Neeson
Collection.



Charles Ray. *Boy*, 1992.
The Art Institute of Chicago, Gift of Edlis/Neeson
Collection.



Katharina Fritsch. *Frau mit Hund (Woman with
Dog)*, 2004. The Art Institute of Chicago, Gift of
Edlis/Neeson Collection.



Eric Fischl. *Slumber Party*, 1983.
The Art Institute of Chicago, Gift of Edlis/Neeson
Collection.

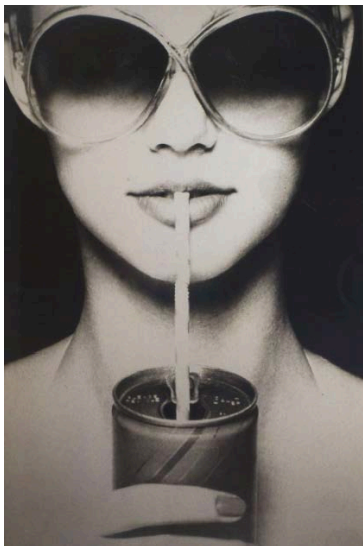


John Currin. *Stamford After Brunch*, 2000.
The Art Institute of Chicago, Gift of Edlis/Neeson
Collection.



Takashi Murakami. *Mr. Pointy*, 2011.
The Art Institute of Chicago, Gift of Edlis/Neeson
Collection.

Photography



Richard Prince. *Untitled (fashion)*, 1982-84.
The Art Institute of Chicago, Gift of Edlis/Neeson
Collection.



Richard Prince. *Untitled (cowboy)*, 1986.
The Art Institute of Chicago, Gift of Edlis/Neeson
Collection.



Richard Prince. *Untitled (cowboy)*, 1987.
The Art Institute of Chicago, Gift of Edlis/Neeson
Collection.



Richard Prince. *Untitled (girlfriend)*, 1993.
The Art Institute of Chicago, Gift of Edlis/Neeson
Collection.



Richard Prince. *Untitled (girlfriend)*, 1993.
The Art Institute of Chicago, Gift of Edlis/Neeson
Collection.



Richard Prince. *Untitled (girlfriend)*, 2000.
The Art Institute of Chicago, Gift of Edlis/Neeson
Collection.



Cindy Sherman. *Untitled #86*, 1981.
The Art Institute of Chicago, Gift of Edlis/Neeson
Collection.



Cindy Sherman. *Untitled #87*, 1981.
The Art Institute of Chicago, Gift of Edlis/Neeson
Collection.



Cindy Sherman. *Untitled #90*, 1981.
The Art Institute of Chicago, Gift of Edlis/Neeson
Collection.



Cindy Sherman. *Untitled #92*, 1981.
The Art Institute of Chicago, Gift of Edlis/Neeson
Collection.



Cindy Sherman, *Untitled #93*, 1981.
The Art Institute of Chicago, Gift of Edlis/Neeson
Collection.



Cindy Sherman. *Untitled #96*, 1981.
The Art Institute of Chicago, Gift of Edlis/Neeson
Collection.